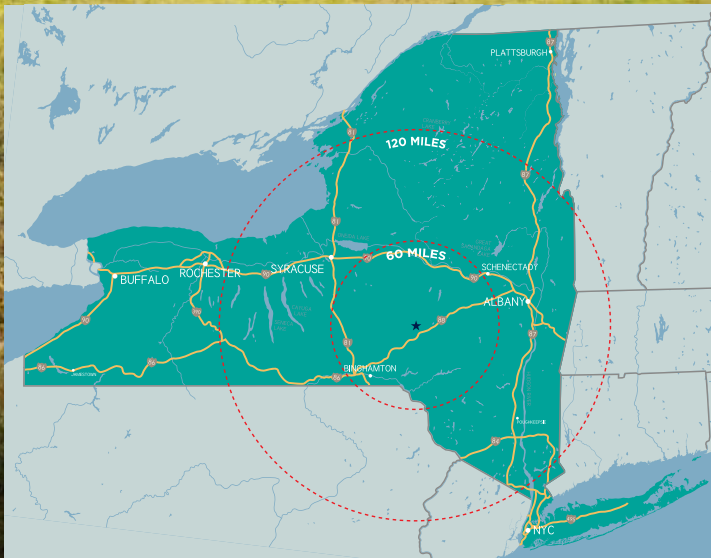




OTSEGO **now**

HUB FOR ECONOMIC PROGRESS



OTSEGO COUNTY/TOWN OF MARYLAND:

DEVELOPMENT OPTIONS/BUILDING SIZES FLEXIBLE
1 MILLION SF DISTRIBUTION LOCATION

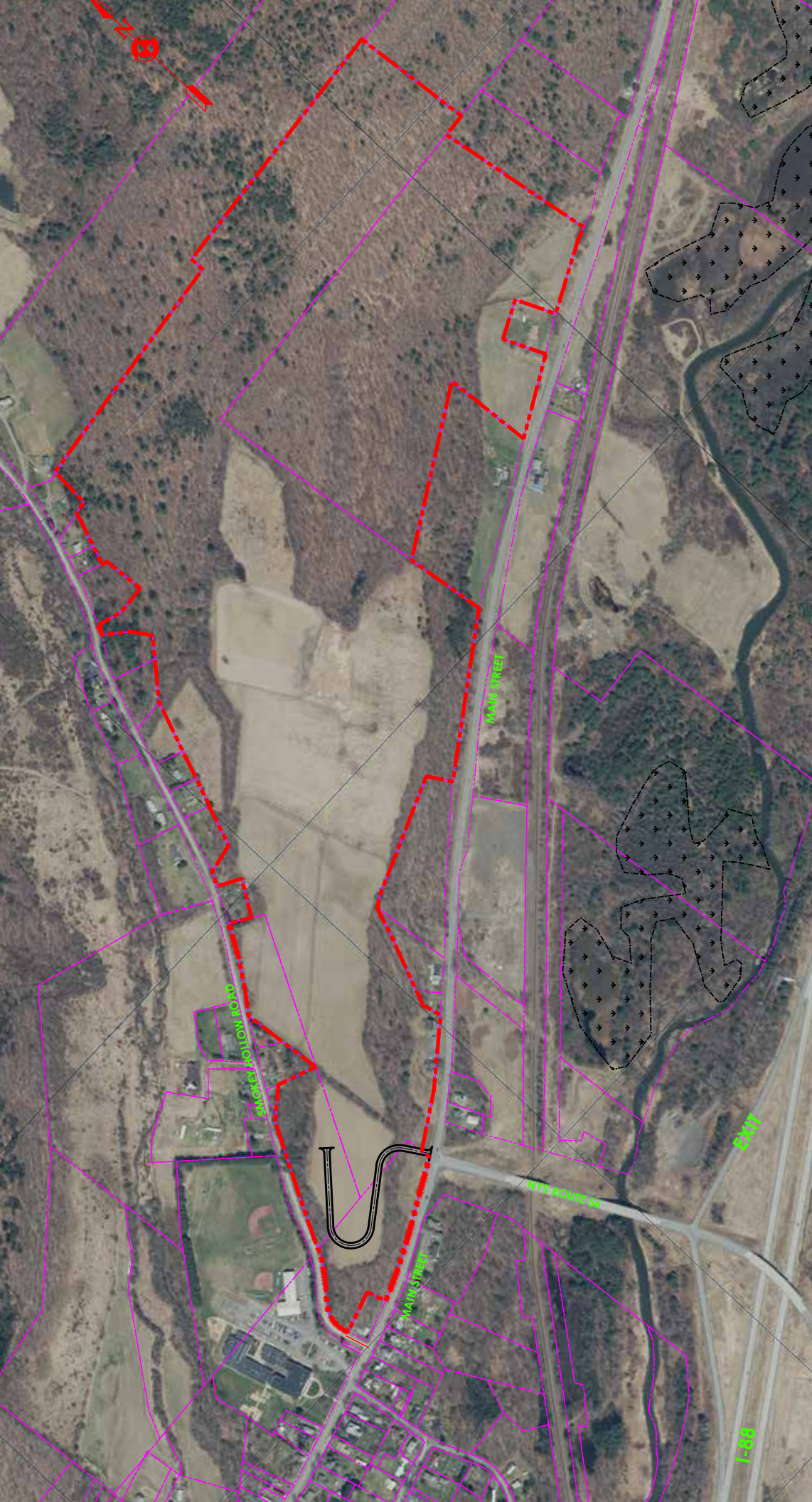
Anticipated Shovel-Ready Status Spring 2018

Town of Maryland



| | |
|--|---|
| Present Zoning | RH: Residential - Hamlet District R-1: Residential - Mixed Use District Accommodates Distribution |
| Location | Smokey Hollow Road and NYS Route 7 Main Street in the Hamlet of Schenevus |
| Nearest Interstate | I-88, Exit 18, 0.30 miles to Interchange |
| Total Area | Approximately 172 +/- acres |
| Nearest Commercial Airport | Oneonta Municipal Airport, approximately 20 miles Albany International Airport, 68 miles |
| On-Site Broadband | Time Warner/Spectrum or Mid-Tel |
| On-Site Electric | National Grid Otsego Rural Cooperative |
| On-Site Municipal Water & Independent On-Site Sewer | |





Dynamic 1 Million SF Distribution Site

Excellent highway access is the hallmark of the Town of Maryland site located a third of a mile from Interstate 88 Exit 18 in Otsego County, New York along NYS Route 7 and Smokey Hollow Road in the Hamlet of Schenevus. The site features approximately 172 acres of land with access to a public water supply system and planned on-site wastewater treatment zoned to allow a variety of uses including mixed use, commercial, industrial and warehousing as well as distribution.



For more information, contact: Alexander "Sandy" Mathes, Jr., CEO
189 Main Street, Suite 500 • Oneonta, NY 13820
mathes@otsegonow.com • (607) 267-4010 • www.otsegonow.com